



S110

110 Ah | 12 V | 20 h

Specifications

Voltage	12 V
Nominal Capacity	110 Ah @ 20 hour-rate
Number of Cells	6
Internal Resistance	Approx. 6.5 mΩ
Design Life	12 years (float charging)
Short Circuit Current	2050 A
Self Discharge	Monthly rate < 3% @ 25 °C Recharge after 6 months Charge before using

Charging & Discharging

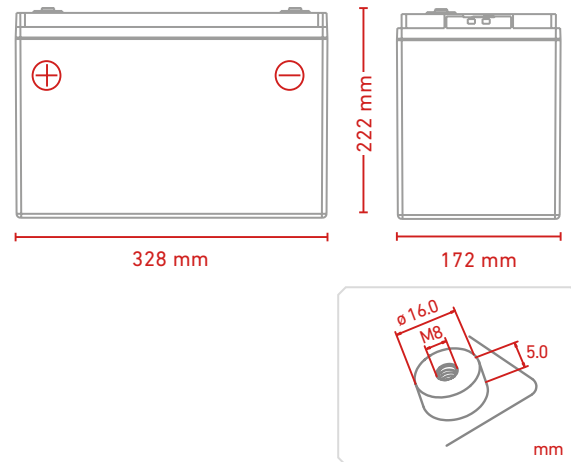
Max. Charging Current	30.0 A
Max. Discharge Current	1000 A (5 sec)
Standby Use Voltage	13.6 V to 13.8 V @ 25 °C Temperature Compensation: -3mV/°C/Cell
Cycle Use Voltage	14.6 V to 14.8 V @ 25 °C Temperature Compensation: -4mV/°C/Cell
Reference Capacity	C3 77 Ah C5 87 Ah C10 100 Ah C20 110 Ah

Temperature Ranges

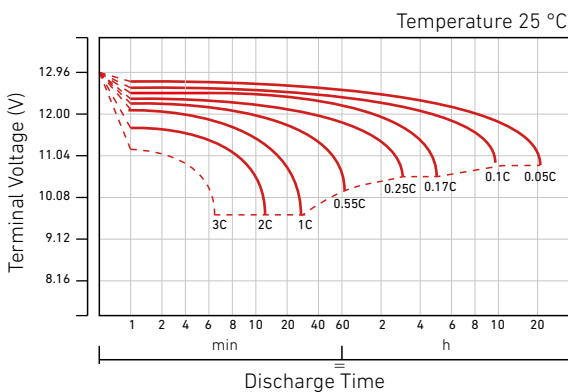
Normal Operation	25 °C ± 5 °C
Discharging	-20 °C to 60 °C
Charging	0 °C to 50 °C
Storage	-20 °C to 60 °C

Mechanical Specifications

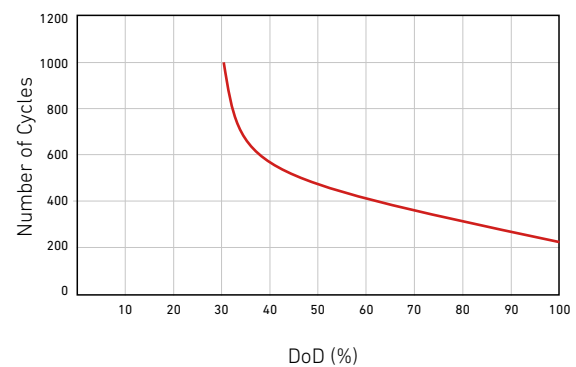
Measurements (L x W x H)	328 x 172 x 222 mm
Weight	Approx. 28.5 kg
Terminals	F12(M8)
Case material	A.B.S. UL94-HB, UL94-V0 Optional



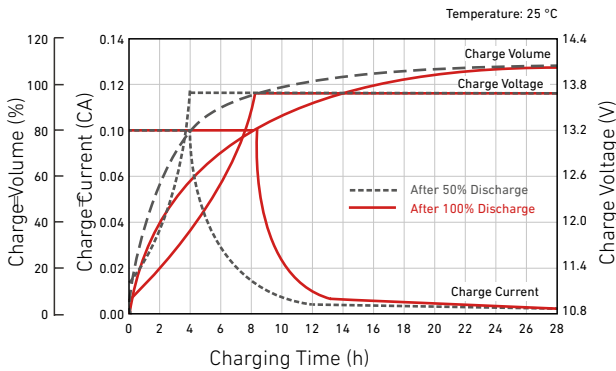
Discharge Characteristics Curve



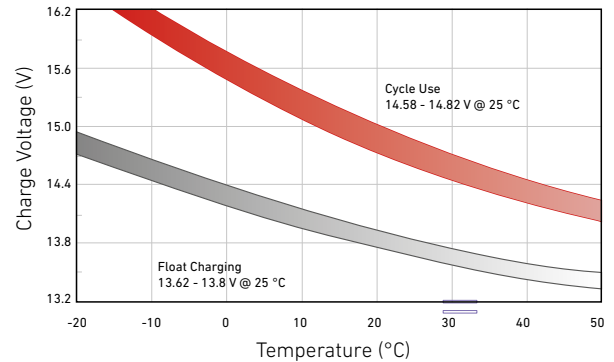
Cycle Life in Relation to Depth of Discharge



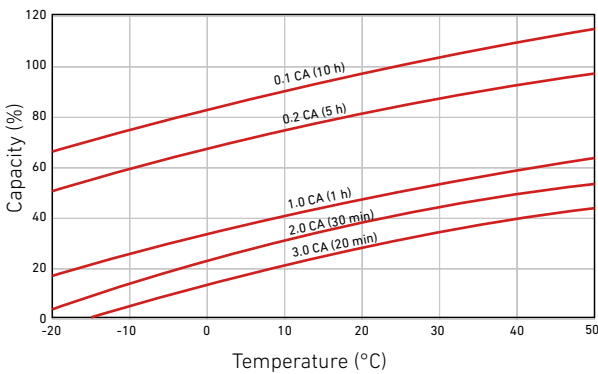
Discharge Characteristics Curve For Standby Use



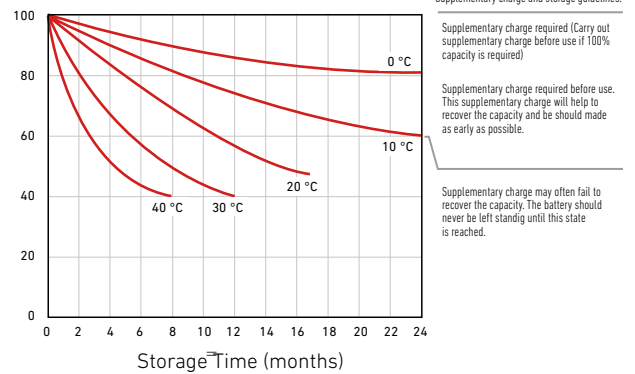
Relationship Between Charging Voltage and Temperature



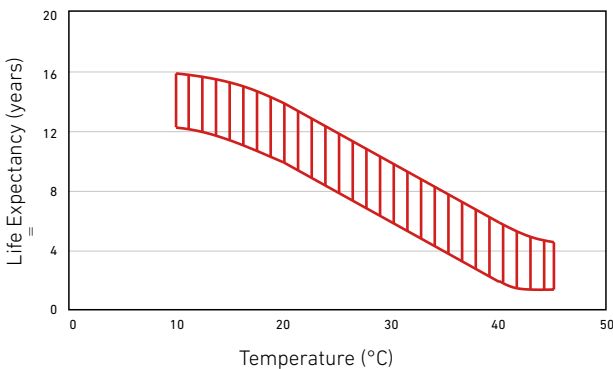
Temperature Effects on Capacity



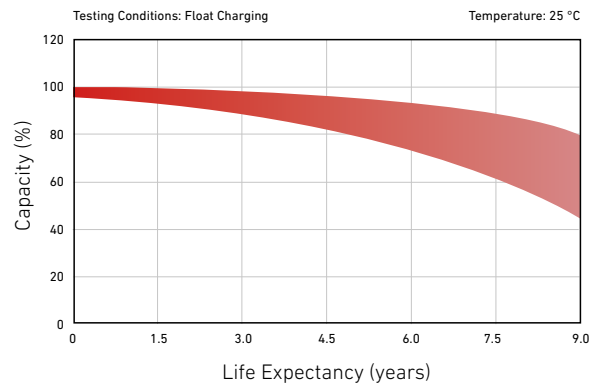
Storage Characteristics



Effect of Temperature on Long-Term Life



Life Characteristics of Standby Use



Constant Current Discharge Characteristics: A (25 °C)

	Time										
	10 min	15 min	30 min	1 h	2 h	3 h	4 h	5 h	8 h	10 h	20 h
1.60 V	231,86	185,41	109,51	61,10	36,40	28,20	22,17	18,87	12,68	10,55	5,52
1.65 V	219,10	177,26	105,13	59,00	35,24	27,33	21,57	18,38	12,54	10,42	5,43
1.70 V	201,71	166,02	100,49	57,09	34,08	26,59	20,98	17,90	12,34	10,26	5,36
1.75 V	184,63	154,49	96,04	55,00	32,89	25,80	20,44	17,45	12,17	10,13	5,30
1.80 V	167,13	142,66	91,80	52,90	31,71	25,00	19,86	17,00	11,96	10,00	5,25
1.85 V	136,59	118,38	79,06	47,44	29,06	23,11	18,46	15,85	11,23	9,41	4,98

Constant Power Discharge Characteristics: WPC (25 °C)

	Time										
	10 min	15 min	30 min	1 h	2 h	3 h	4 h	5 h	8 h	10 h	20 h
1.60 V	394,1	324,13	198,90	114,82	68,99	53,87	42,56	36,37	24,76	20,74	10,87
1.65 V	379,6	314,47	192,96	111,52	67,12	52,43	41,56	35,55	24,54	20,51	10,71
1.70 V	355,9	298,94	186,29	108,56	65,26	51,23	40,58	34,75	24,21	20,23	10,59
1.75 V	331,6	282,23	179,88	105,23	63,27	49,91	39,70	33,99	23,92	19,99	10,48
1.80 V	305,4	264,29	173,67	101,79	61,32	48,56	38,69	33,23	23,57	19,76	10,38
1.85 V	254,1	222,42	151,06	91,86	56,49	45,09	36,10	31,09	22,18	18,63	9,87